

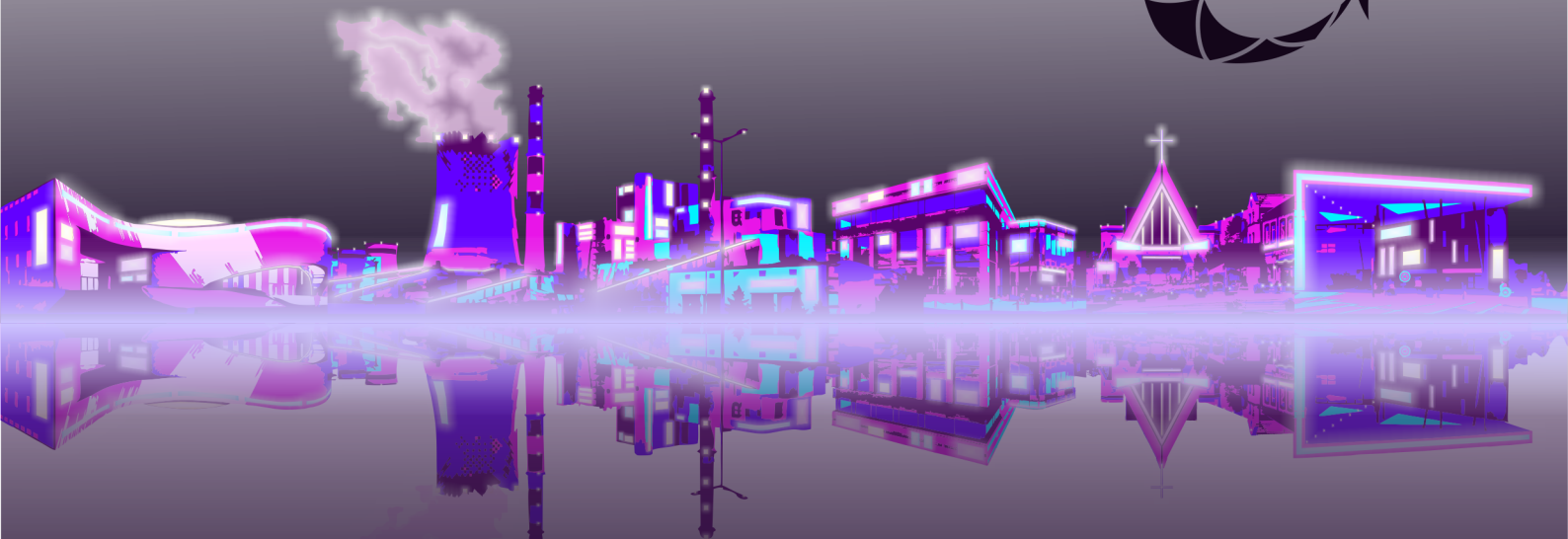


DRAGON CUP

FINAL ROUND OF THE EUROPEAN CUP IN TRAILO 2024
WORLD RANKING EVENT

8-10th NOVEMBER, 2024
JAWORZNO, POLAND

BULLETIN 2



05.11.2024

Wydarzenie objęte honorowym patronatem Prezydenta Miasta Jaworzna Pana Pawła Silberta.

Organizer:

Stowarzyszenie Rozwoju Orienteeringu

Co-organizer:

Geological and Ecological Education Center „GEOsfera”

Officials:

Event Director: Adam Stalka

Mapper: Adam Stalka

Course setters: Hanna Kapońska, Marta Kapońska, Adam Stalka

Graphic designers: Hanna Kapońska, Marta Kapońska

Event Adviser: Maciej Urbaniak

Jury: Lars Jakob Waaler, Krystian Petersburski, Alessio Tenani

Classes:

Elite (EO – open, EP - physically challenged, EJ – juniors), Amateurs (A).

Elite - Long courses with a high level of difficulty, intended for advanced competitors.

Amateurs – Short courses with a lower level of difficulty, intended for beginner competitors.

Dragon Cup:

The 3 best results from 4 possible stages will be taken into account for the final classification. To calculate the result from a given stage, the formula known from e.g. CHIS Cup with minor modifications will be used. Each stage will have a maximum score of: 100 points for TempO and PreO stages and 90 points for Sprint and Night PreO stages. A detailed description of the formula, including modifications, can be found at link:

https://drive.google.com/file/d/19XI_2cbgHSyY0FOGOnVPtdADY9zHQ5vD/view?usp=sharing

Detailed program:

Please note the changes in stage times, which result from a large number of entries and are intended to maintain similar weather conditions for competitors.

- Friday 8th November:
Preo Sprint – Arboretum Park Gródek (12:00 – 15:30),
- Saturday 9th November:
Tempo (WRE, ECTO) – Geosfera (09:00 – 15:00),
Campfire – Event Center (around 15:00)*
Prize-giving ceremony for Tempo - brine graduation tower in GEOsfera (17:00),
Night Preo – Geosfera (17:30 – 20:00),
- Sunday 10th November:
Preo (WRE, ECTO) – Arboretum Park Gródek (09:00 – 15:00),
Prize-giving ceremony for Preo and total classification – Event Center (17:00).

Not part of Dragon Cup:

- Monday 11th November:
A familiar club organizes the Autumn Orienteering PreO in Gliwice - Las Żorek (9:00-15:00), More info: cyrkino.gliwice.pttk.pl – Post from 06.10.2024

* We provide each competitor with a sausage, bread, ketchup and mustard for the campfire. Sausage frying sticks will also be available at the Event Center. Competitors can also bring their own food and drinks.

Maps:

Map „Geosfera” – ISSprOM 2019-2, revision 6, mapped in scale: 1:3 000,

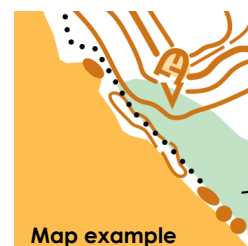
Contours interval: 2 m, mapped in February - October 2024,

Map „Arboretum Park Gródek” – ISSprOM 2019-2, revision 6, mapped

in scale: 1:3 000, Contours interval: 2 m, mapped in February - October 2024,

General comments to mapping:

The maps were created in a period with significantly poorer visibility due to vegetation. In general, the terrain is now much "whiter", although the bushes still limit runnability to a significant extent, but due to the lack of leaves, it is much more difficult to



observe this from the paths. According to the ISSprOM, the range of tree crowns was mapped to white. In its current state, with a small number of leaves on the trees, they are less visible, and tree trunks that are tightly grouped together are much more visible. Therefore, the maps mark both the extent of tree crowns and the distinct vegetation border when the trunks form such a border.

The water level within the Gródek Park is very variable. Some of the infrastructure is built in such a way that it is located shallowly under the water surface. Therefore, some of the mapped objects will be underwater. However, solving the tasks does not require the use of objects that may be under the surface.

Terrains:

Geosfera map includes area of the former Triassic limestone quarry Sadowa Góra. This area is arranged for the needs of visitors, creating an education center. Most of it is not covered with any vegetation, so visibility is very good. In the remaining part, the vegetation forms small clusters, more often they are low trees or shrubs, which greatly limit visibility in these areas. Many rock objects appear at the bottom of the quarry and in its slopes. Within the quarry there are many small architectural objects and several utility buildings. There are many paths and sidewalks prepared for visitors.

Arboretum Park Gródek map includes excavations after dolomite exploitation of the former Szczakowa Cement Plant. Despite its post-industrial origin, it is an area of exceptional natural values. There is a mosaic of natural habitats: thermophilous grasslands, meadows, rocky habitats, wetlands, water reservoirs and oak-hornbeam forests. Most trees significantly limit visibility, but there are many open areas and water reservoirs within the arboretum. Rock objects are located mainly on the slopes of the quarry, as well as at their bases in the form of rock rubble. The main paths are asphalt, there are also countless bicycle dirt tracks.

Embargoed areas and event locations for Dragon Cup 2024:

Embargoed areas and event locations including events centers for Dragon Cup 2024 can be found at the link: <https://bit.ly/4cE9oSS>

Please familiarize yourself with this map!

Courses:

PreO Sprint (Friday 12:00-15:30), Map Arboretum Park Gródek

Parts: Speed part (7 tasks) and Main Sprint part (23 tasks)

Course: Time limit - 10+26 min (O/J), 10+32 min (P); Course length – 20 m + 300 m;

Elevation - 2 m

Classification: Number of correct answers on Main part, then time from Speed part + 120 seconds penalty for every mistake.

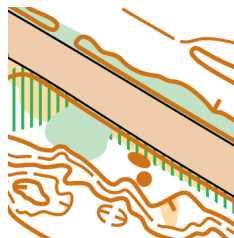
Class: Open (O), Physically challenged (P), Junior (J),

Zero tolerance: 4 m without exceptions

Distances: EC – start, 0 m | Finish speed part – Start main part, 70 m | Finish main part – EC, 400 m | After the finish, return to the event center along the course.

It is possible to purchase a map (5 euros) for training on Saturday. We will try to leave kites in the area, but we cannot guarantee that at this time.

There is no toilet in Event Center.



Tempo (Saturday 09:00-15:00), Map Geosfera

Course: 8 clusters x 5 Tasks each,

Classification: Time + 30 sec penalty for mistake,

Class: Open (O), Physically challenged (P), Junior (J),

Zero tolerance: 4 m without exceptions on clusters 2-8 and 8 m without exceptions on cluster 1.

The tasks in cluster 1 are located 100-200 m from the competitor. That's why we decided to increase the zero tolerance for this cluster to 8 m. Additionally, it will be printed on A4 size paper. All kites at this cluster will be double. A sample set of loose and bound maps of A4 size will be available at the start (before cluster 1), in order to better familiarize yourself with maps of this size.

Loose maps will be prepared at all the time control stations. If you rather use bound maps or point the answers, inform the marshal at each time control station during your identification.

The path between cluster 2 and 3 is bumpy with a sandy and rocky surface. In the link below you can see how this path looks like:

<https://youtu.be/j-WvClSBoi8?si=XTQGsm6pYFimJDSQ>



Physically challenged class competitors have the opportunity to go around this path on an asphalt road and sidewalk, which the competitors will use to move from the parking to the start. This option extends the course by 990 m.

Visibility conditions have improved significantly in recent weeks. Therefore, you may see more kites visible at some clusters. In such a case, tapes will be placed in the field indicating which kites are used for a given station and marshals will precisely indicate the flags that competitors are to consider when solving the cluster.

Event Center (including wheelchair-accessible toilet) will be available **after the finish of TempO course**. The toilet is open only from 10:00 to 18:00.

Distances: North Parking – Start, 890 m | Start – Finish (EC), 1100 m | EC – North Parking, 370 m.

Night Preo (Saturday 17:30-20:00), Map Geosfera

The night stage will be more for fun than competitive, with a large time limit so that you can easily get acquainted with this formula. All competitors will start from a mass start and will be divided (by organizers) into two groups. The first group starts on the green leg, then switches the map and goes to the blue leg. The second group will be the other way around. The map exchange takes place at the starting point. The maps (legs) are prepared in such a way that they allow you to go both ways on each leg (clockwise and counterclockwise). It is up to the competitors in what order they will punch control points.

However, the most important thing is that on each leg the competitor punches ONLY 12 of the 15 control points; the choice of rejected tasks is up to the competitor. In total, throughout the entire stage, the competitor punches 24 out of 30 points. If the competitor punches more than 12 controls on a given part, then these punches will be canceled. However, please do not test the capabilities of TOP (a big thank you to Libor Forst, who adapted TOP to such assumptions!) and follow the assumptions. If it is necessary to void the control, all competitors who punched the voided control will be assigned the correct answer. However, don't take this as an encouragement to complain ;) All kites will be equipped with reflectors and red chemical lighting.

Below you will find a map.

Starting procedure:

Competitors punch start before the stage begins. When changing the map, the competitor will change it himself from the labeled box. The course time stops after crossing the finish line after his second leg. Then the competitor must punch finish and go to readout of the answers.

Mass start for P and A class - 18:00

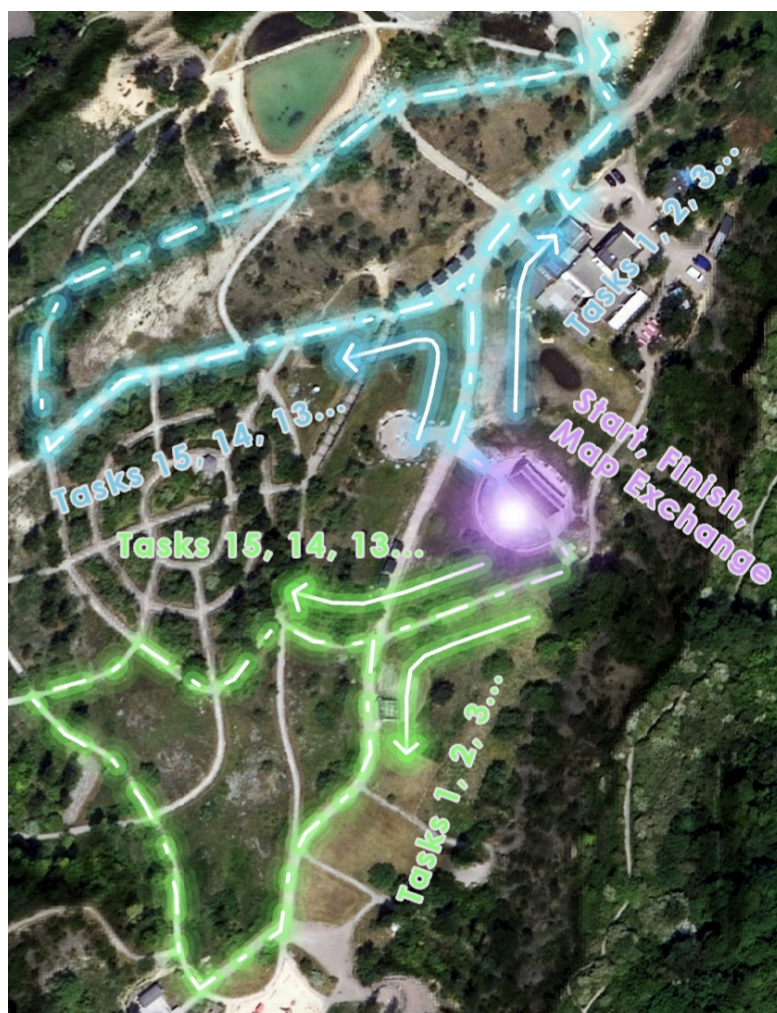
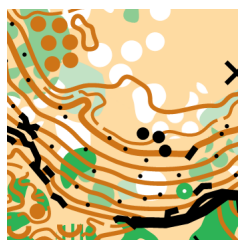
Mass start for O and J class - 18:10

Course parameters:

Mass start, Parts: 2 legs (blue and green) with map exchange, Time limit: 90 min (O/J), 100 min (P);

Course length – 500 m + 500 m; **24 out of 30 control points – 12 on each leg (only A/Z tasks)**, Zero tolerance: 4 m without exceptions.

Classification: Number of correct answers, no tiebreaker



Stage plan for night preo course

Preo (Sunday 09:00-15:00), Map Arboretum Park Gródek

Parts: 2 TC x 3 tasks each, 2 Parts Preo with 37 tasks (18 tasks + 19 tasks),

Course: Time limit - 144 min (O/J), 150 min (P);

Course length – 1100 m (500+600 m),

Elevation: 6 m (1 + 5 m)

Classification: Number of correct answers, then time from TC (60s penalty, zero unavailable).



Classic preo divided into two parts. In part 2 there is a one-way fragment, marked on the map, control descriptions and in the path. Please remember that you are not allowed to reverse on a one-way path.

The return after the finish takes place through the "Koparki" diving base and then along the course of the first part of Preo and will be marked in the field.

It is possible to park your car in the parking, 200 m from the start.

Wheelchairs toilet available in Event Center - available after and before start of PreO course and after Part 1 in the field.

Zero tolerance: 4 m or 8 m without exceptions depending on the information next to control descriptions

Distances: EC – Prestart, 730 m | Parking close to start – Prestart, 200 m | Prestart – TC 1 and start Part 1, 30 m | Part 1, 500 m | Finish Part 1 – TC 2 and start Part 2, 230 m | Part 2, 600 m | Finish – Event Center – 1,9 km | Finish – Parking close to start, 1,4 km.

Emergency punch:

Control point can be confirmed by punching a hole in the control description with a safety pin. Above the control descriptions there will be letter markings that will indicate in which column a given answer should be confirmed. If you have used safety pin for punching, tell it to the Marshal at the finish line. The marshall will collect your map and take care of the punching being added to the results.

Zero tolerance:

The general Zero tolerance is 4 m without exceptions. **On cluster 1, during Tempo, all tasks have their tolerance increased to 8 meters.** On Preo, if a control point has a raised zero tolerance, the information is located to the right of control descriptions. Far Control may have more than one flag to increase visibility.

Entries and fees:

Elite Class (E-class) competitors register for the WRE/ECTO stages via IOF Eventor.

WRE/ECTO E-class

TempO - <https://eventor.orienteeing.org/Entry?eventId=7996>

PreO - <https://eventor.orienteeing.org/Entry?eventId=7997>

Registration form for remaining stages for E-class and all stages for foreign competitors in A-class: <https://forms.gle/7uGsBvorWFZEK9fn6>

Entries deadlines for all competitions in all classes – 31.10.2024 (Thursday).

Payment in EUR - cash only. Payment in PLN is possible in cash and to a bank account. Transfer details can be found on the next page. If you want to pay in EUR be sure to have the exact amount prepared in cash. Entry fees are listed in the table below.

Entry fees:

Entry fee for each competition	Elite	Foreign Amateurs
TempO/PreO	25 EUR / 110 PLN	7 EUR / 30 PLN
Sprint/Night Preo	10 EUR / 40 PLN	7 EUR / 30 PLN
Only map (sprint)*	5 EUR / 20 PLN	-

*For elite competitors who did not have the opportunity to take part in Friday sprint and would like to familiarize themselves with the characteristics of the terrain. The map will be available on Saturday in the event center.

Account data in PLN:

Name: STOWARZYSZENIE ROZWOJU ORIENTEERINGU

IBAN: PL67 1090 2590 0000 0001 4897 6823

BIC (SWIFT): WBKPPLPP

Purpose of payment: Dragon Cup + Name and Surname

We accept late entries until 05.11.2024 (Tuesday). The entry fee for late entries increases by 50%. Payment only in cash.

We issue invoices for paid entry fees. Please submit your request via email: orienteering.klub@gmail.com

Assistance:

Pushers and punching assistance must be arranged by the participants.

Recording system:

PreO: Toe Punch, provided by the organizer. Timed controls: ANT

Transport arrangements:

Jaworzno is located between two international airports (Katowice - Pyrzowice, Kraków - Balice), up to 50 km away. The A4 highway runs close to Jaworzno and the A1 highway runs a little further away. They enable quick access to Jaworzno also from airports in Rzeszów (approx. 2 h 15 min), Wrocław (approx. 2 h 30 min), Warsaw (approx. 3 h - Chopin Airport, 3 h 45 min Modlin Airport) and other Polish and foreign airports. You can reach Jaworzno also by train (Jaworzno Szczakowa station). Direct trains run mainly from Katowice and Kraków - both cities are excellent transfer hubs. You can reach Katowice and Kraków by train or bus from the previously mentioned airports as well as other Polish and foreign cities, e.g. Prague, Bratislava, Vienna, Budapest or Ljubljana. Public transport is very well developed in Jaworzno and other neighboring cities that are part of GZM Metropolis, so we recommend this option for moving around during competitions.

We have also prepared a transport guide for you:

<https://eventor.orienteeing.org/Documents/Event/8358/1/Transportation-guide>

Accommodation:

There is a selection of accommodation options in Jaworzno itself and neighboring cities. If you plan to travel by public transport, we recommend looking for accommodation directly in Jaworzno, or close to the Katowice - Kraków railway line.

National Independence Day:

If you stay in Poland until Monday, November 11th, please take into account that this day is a national holiday (National Independence Day). Therefore, public transport will run according to holiday (Sunday) schedules, and most facilities/shops will be closed (just like on Sunday). Celebrating the holiday in most places in Poland does not significantly affect the ability to travel (except for Warsaw).

Polish Maldives:

Arboretum Park Gródek is often called the Polish Maldives, and international media write about it. Therefore, it is a popular place among tourists, and the competition will take place over a long weekend, so you will share the routes with other people visiting the Park. However in November, the number of visitors will not be a problem in organizing the competition.

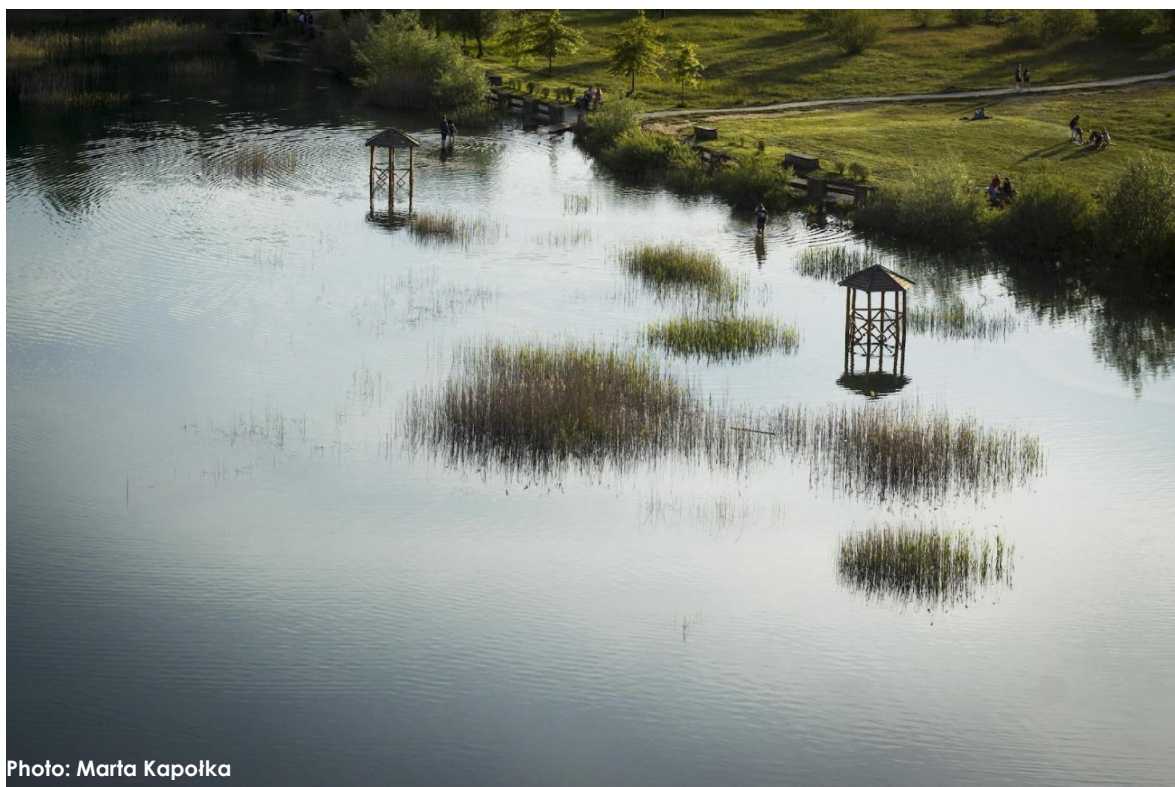


Photo: Małta Kapolka

Social media:

We encourage you to follow our profiles on social media, where we publish a lot of interesting and useful information.

Facebook: <https://www.facebook.com/orienteering.klub>

Instagram: <https://www.instagram.com/orienteering.klub/>

Contact:

You can contact us via the club's email: orienteering.klub@gmail.com or directly with the event director, Adam Stalka - email: stalkaadam@gmail.com, phone: +48 730 838 610.

Closing remarks:

By registering the competitor agrees to the terms of this bulletin, gives his/her consent for publishing personal data such as name, surname, club and competition results and personal image on photographs and other post-event materials and publications. The competitors should be insured on their own. We provide medical care during the Saturday and Sunday stages.

Welcome to Dragon Cup!



Wydarzenie objęte honorowym patronatem Prezydenta Miasta Jaworzna Pawła Silberta

